

ONE VOICE MIXED CHORUS presents

# WELL-STRUNG

FEATURING

## WELL-STRUNG

With a World Premiere by composer  
George Maurer and poet Sierra DeMulder

Saturday, March 18, 2017  
7:30 p.m.

Ordway Concert Hall

Jane Ramseyer Miller  
Artistic Director

Mindy Eschedor  
Accompanist

ONE VOICE  
MINNESOTA'S LGBTQ  
MIXED CHORUS

Building community and creating social  
change by raising our voices in song.



Large  
Print



Trans  
Inclusive



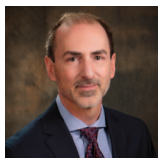


# CHECKUPS ARE GOOD FOR YOUR FINANCIAL HEALTH

You have an annual physical to make sure you are healthy. What do you do to make sure you remain financially fit?

Once a year, you should have a thorough financial checkup. I specialize in thoughtful and unbiased investment guidance designed to keep your finances in shape.

Call today for more information or to schedule a consultation.



**Wealth Architects, Inc.**  
**Michael R. Vitale, CFP®, MBA**  
President

9800 Shelard Parkway  
Suite 220  
Plymouth, MN 55441  
763.525.0001  
[michael.vitale@wealtharchitectsinc.com](mailto:michael.vitale@wealtharchitectsinc.com)  
[www.wealtharchitectsinc.com](http://www.wealtharchitectsinc.com)



# WELCOME



## FROM THE ARTISTIC DIRECTOR

It is a treat for a chorus to work with a professional string quartet, and when I first heard Well-Strung I knew we had to get them to the Twin Cities! I was impressed by their musical finesse but also by their ability to combine classical music with contemporary pop – a perfect combination for One Voice’s OUT in Our Schools program. Yesterday, GSA students from across the metro area enjoyed our collaborative concert with Well-Strung including a pizza party Q&A with Chris, Ed, Daniel and Trevor after the show.

Soon after booking Well-Strung, I had a call from the American Composers Forum inviting One Voice to participate in their “Healing & Hope Through Song” commissioning program. I jumped at the chance to create new music especially for this concert featuring poetry, strings and choral music. I read over a dozen poet applications but Sierra DeMulder’s poetry was an instant draw. George Maurer’s soaring melodies and jazz-inspired harmonies were the perfect fit. It has been a pleasure to work closely with these two incredible artists over the past 10 months. Tonight you will experience the premiere of their collaborative work: *Still Standing*.

*Well-Versed* honors the power of words: to cajole, heal, educate, celebrate, provoke, prod, protest, and to influence change. Speak up, speak out!

– Jane Ramseyer Miller

*Like a small boat on the ocean  
Sending big waves into motion  
Like how a single word can make a heart open  
I might only have one match but I can make an explosion*

- Rachel Platten, Fight Song



## FROM THE EXECUTIVE DIRECTOR

Welcome to **Well-Versed**, an evening celebrating poetry and the beauty of language. Nothing is more beautiful than poetic language spoken from the heart. I remember when my husband proposed to me many years ago, he made a giant Valentine of banners filled with quotes by the likes of Shakespeare, Whitman, Keats, and Wilde with various declarations of love. It was and is such a beautiful expression of love and it made me swoon. Tonight we celebrate the love of language and the power behind words. Because as the song goes, “What the world needs now, is love sweet love” more than ever.

– Christopher Taykalo



One Voice Mixed Chorus is Minnesota's only lesbian, gay, bisexual, transgender, and straight allies (LGBTQA) chorus. Founded in 1988, One Voice has been **"building community and creating social change by raising our voices in song"** for 29 years.

Known for their musical excellence, diverse programming, innovative collaborations, and deep commitment to community outreach, One Voice is the largest LGBT chorus in North America with 125 singing members ranging from ages 16 to 79, and nearly 50 non-singing "Fifth Section" volunteers. Under the direction of Artistic Director Jane Ramseyer Miller, the award-winning chorus inspires transformation through passionate, vibrant, and creative performances at concerts, during Outreach Tours and through their pioneering OUT in Our Schools program, now in its 18th year. One Voice has performed for thousands of people throughout the Twin Cities, Greater Minnesota and beyond, and is described by Chorus America as **"one of the region's best ensembles."**

One Voice Mixed Chorus: 732 Holly Avenue, Suite Q — Saint Paul, MN 55104-7125  
Contact information: 651.298.1954 • [www.OneVoiceMN.org](http://www.OneVoiceMN.org) • [Info@OneVoiceMN.org](mailto:Info@OneVoiceMN.org)



One Voice Mixed Chorus is a member of GALA Choruses, a network of over 200 queer choruses across the world, with a mission of inspiring member choruses to change the world through song. Founded in 1982, GALA Choruses is the world's leading international choral association for gay, lesbian, bisexual, transgender and allied choruses. For more information visit [www.galachoruses.org](http://www.galachoruses.org).

## OUT in Our Schools

Since 1999, One Voice has tackled the problem of bullying and homophobia in our communities through our interactive OUT in Our Schools program. Over the years, we have collaborated with over 50 Minnesota middle and high schools to provide positive LGBT role models and quality music partnerships culminating in joint concerts with our chorus and students performing together. Through this unique program we also support educators and administrators at each participating school with their work building understanding and respect for all.



OVation is the portable version of One Voice—an a cappella ensemble that brings One Voice's music and message almost anywhere. Since its founding in 2000, OVation has presented over 200 performances, reaching over 30,000 people in dozens of Minnesota communities, at choral festivals from coast to coast, and internationally in Canada and Ireland. OVation performs at 20-30 community engagement events annually, in venues that have included the Minnesota State Fair, the Northern Voice Festival, the Minnesota Arboretum, TwinsFest, several Pride festivals, places of worship, and in partnership with organizations like RECLAIM!, the Aliveness Project, and Avenues for Homeless Youth.

For information on booking this talented and entertaining ensemble for your party, sacred service, business, wedding, coming-out party, birthday bash, or other event go to our webpage at [www.OneVoiceMN.org](http://www.OneVoiceMN.org), the Hear Us Sing tab, and click Book-One-Voice.





## 2017 CALENDAR HIGHLIGHTS

**Well-Versed**  
featuring Well-Strung

**March 18, 2017 • 7:30 p.m.**  
Ordway Concert Hall  
345 Washington St., St. Paul

**Queer Music Consortium Pride Concert**

**June 4, 2017 • 3:00 p.m. — FREE**

*Note that this concert is on a Sunday!*

Como Park Pavilion  
1360 Lexington Pkwy N., St. Paul

**The Pirates of Penzance**  
Pride Weekend 2017

**June 22, 2017 • 7:30 p.m. (Preview)**

**June 24, 2017 • 3:30 p.m.**

**June 25, 2017 • 2:00 p.m. & 5:30 p.m.**

Raspberry Island  
2 Wabasha St., St. Paul

**Showtune Showdown**

**July 17, 2017 • 7:30 p.m.**

Woman's Club of Minneapolis  
410 Oak Grove Street, Minneapolis

For a complete performance schedule, volunteer and audition information, visit:

[www.OneVoiceMN.org](http://www.OneVoiceMN.org) or call 651.298.1954

## ARTISTIC STAFF

### JANE RAMSEYER MILLER



**ARTISTIC DIRECTOR**

Jane Ramseyer Miller is in her 22nd year as Artistic Director for One Voice and also serves as Artistic Director for GALA Choruses, a national association of LGBT choruses. She holds Masters in Choral Conducting from the University of Minnesota and a BA in Psychology from the University of Waterloo in Ontario, Canada. She enjoys creative community collaborations and has created choral music with The Women's Cancer Resource Center, Shakopee Women's Correctional Facility, In the Heart of the Beast, Kairos Dance Theatre, Mu Daiko, and Teens Rock the Mic among others. In 2008 she received the GALA Choruses Legacy Award for her conducting, innovative programming and commitment to community outreach. In 2010 she was awarded the ACDA VocalEssence Award for Creative Programming and the ACDA Minnesota Advocate for Choral Excellence (ACE) Award.

### MINDY ESCHEDOR



**ACCOMPANIST**

Mindy Eschedor is an active Twin Cities collaborative pianist whose engagements regularly include vocal coaching/accompanying, chamber music, and theater work. She has performed with such companies as the Ordway Center for Performing Arts, Nautilus Music-Theater, Guthrie Theater, Chanhassen Dinner Theatres, Interact Theatre, Theater in the Round, Skylark Opera, and Minneapolis Musical Theater. Mindy is a Music Director for Nautilus' Wesley Balk Opera/Music-Theater Institute, and a frequent artist on the *Rough Cuts* series. Mindy was Principal Staff Accompanist at MacPhail Center for Music from 1999-2010 and currently serves as choral accompanist at the University of St. Thomas and Robbinsdale Armstrong High School.

### GARY RUSCHMAN



**OVATION MUSIC DIRECTOR**

Kentucky native Gary Ruschman is an in-demand performer, conductor, and composer, with singing credits ranging from rock bands to the Prague Choral Festival, Saint Paul Chamber Orchestra, American Bach Soloists, and *A Prairie Home Companion* and was a member of renowned vocal ensemble Cantus for a decade. A co-recipient of Chorus America's 2011 Education and Community Outreach Award, his educational work has also included in-school programs for San Francisco Opera, Portland Opera, and most recently Minnesota Opera, where he was commissioned to create a new children's opera for the Nobles County Integration Collaborative in Worthington, Minnesota. On the podium, Ruschman has recently led performances of Blue Waters Brass, Bach Society of Minnesota's *Bach with Friends* baroque retreats, and was chorusmaster for Twin Cities Early Music Festival's 2015 production of Gluck's *Orfeo*. Gary currently serves as Director of Music at St. Timothy Lutheran Church in Saint Paul, and is a 2016-17 recipient of a Faith Partners composing grant from the American Composers Forum.



# MEMBERS AND COMMITTEES

## BOARD OF DIRECTORS

Paul Halvorson	CHAIR
James Roth	VICE CHAIR
Lee Silverstein	TREASURER
James Gottfried	SECRETARY
Tom Becker	MEMBER AT-LARGE
Katrina Johnson	MEMBER AT-LARGE
Abbey Martin	MEMBER AT-LARGE
Colleen Watson	MEMBER AT-LARGE

---

## THANK YOU TO OUR COMMITTEE VOLUNTEERS

We are fortunate to have many dedicated individuals who generously volunteer their time and skills in service to One Voice. Many thanks to each member of our board of directors and the following chorus committee chairs:

Development – Colleen Watson, Finance – Julia Reed, Human Resources – Mary Nienaber,  
Leadership & Governance – Paul Halvorson, Marketing – Dick Van Deusen,  
Membership & Diversity – Anita McColley, Music – Jane Ramseyer Miller,  
Production – Sherrie Luetgers

## JOIN ONE VOICE ON STAGE!

Auditions for our 30th Season (2017-2018) will be held in late August. Sign up at the One Voice table in the lobby to get an audition reminder by email or call the office to receive more information. One Voice rehearses on Monday nights. For a complete performance schedule, volunteer, and audition information visit: [www.OneVoiceMN.org](http://www.OneVoiceMN.org) or call 651.298.1954.

## BECOME A MEMBER OF OUR LEADERSHIP TEAM!

One Voice has grown, creating a need to expand our committees and board. We are seeking talented people who are passionate about One Voice's mission and music to join our leadership team as board and committee members. Contact Christopher Taykalo at: [ExecutiveDirector@OneVoiceMN.org](mailto:ExecutiveDirector@OneVoiceMN.org) (or) 651.298.1954.

# ONE VOICE MEMBERS

# On Leave

\* OVation Ensemble

♪ Section Music Leader

+ Section Representative

## SOPRANO

Britt Abel  
Martha Bentley  
Catherine Dalton  
Kristen English  
Marisa Geisler ♪  
Cheryl Hornstein  
Vicki Janisch-Tri #  
Darcy Juhl  
Cece Klueh  
Rosemary Kosmatka  
Anita McColley +  
Sarah McMahill  
Maren Milbert  
Cecilia Miller  
Sarah Olson  
Steph Pederson #  
Eponine Post  
Erika Rae  
Ann Rixmann  
Jennifer Root  
Liana Roux #  
Jane Sage  
Adrienna Schultz \*  
Jasmine Scott  
Emily Smith  
Gloria Vande Hoef #  
Sylvia Vandenberg-Daves  
Elizabeth Vaught

## ALTO

Sharon Barnd  
Barbara Beacham  
Danielle Boor ♪  
Sue Campbell  
Beth Desotelle  
Isabel Fajardo  
Cathy Geist  
Ashley Hannahs \*  
Jennifer Heaton  
Kelli Heckman  
Sarah Henderson  
Kate Lynn Hibbard \*  
Lynn Holden  
Heidi Jensen #  
Robin Keck #  
Sherry Kruczek  
Sherrie Luetgers  
Isabel Miller  
Claire Morrison  
Karen Muleski  
Mary Nienaber  
Saylem Olberg  
Arthur Overvold #  
Sara Pecor +  
Sarah Ann Post #  
Claire Psarouthakis  
Lisette Schlosser  
Zoey Schultz  
Kristen Schweiloch #  
Judy Stein  
Tisha Van Haaften  
Tracy Villinski  
Rebecca Warren \*  
Joan Wing

## TENOR

Jeff Anderson  
John Bagniewski  
Sarah Bizek  
Dylan Croeker  
Duane Dial #  
Michael Dodson  
Kevin Enerson #  
Brian Geving  
Kirby Goodell  
Erika Grossman  
Katrina Johnson  
Kevin Kirsch #  
Benjamin Lamb  
Michael Lee \*  
Shari Pleiss #  
Janna Pressman  
Jen Rivera  
Wayne Schneider  
Maureen Seibert ♪  
JD Stocksett #  
Jake Thacker  
Colleen Watson  
John Whalen  
Austin Wiebe  
Kory Wolter  
Dennis Wu



## BASS

Scott Burglechner  
Will Drew +  
Joselyn Fear\*  
Nate Freeman  
James Gottfried  
Paul Halvorson  
Adrian Hegeman  
Allan Henden  
AP Hopper ♪  
David Jerde  
Dennis Kearney  
Andrew Kedl  
Jay Kurvers  
David McMahon  
Douglas Munro  
Theo Park #  
Erik Peregrine  
Ethan Pleshe  
Daniel Post  
Dale Schumacher  
John Siracusa  
Lane Skalberg  
Kevin Smieja #  
Anthony Stanton  
Nathan Stohlmann  
Tom Vance  
Dick Van Deusen  
Ryan Van Haaften \*  
Allan Warrior  
MJ Zappa +

## FIFTH SECTION VOLUNTEERS

Carmelle Abron	Betsy Lee
Linda Alton	Russ Lovaasen
Miriam Bagniewski	Sharon McDonald
Barbara Beers	Rebecca Merrill
Anthony Beerswing	Anna Muir
Marietta Booth	Randy Okan
Anna Brenk	Sarah Olson
Theresa Cherubini	Stephanie Peck
Courtney Chesher	Paul Petrella
Jeanne Cornish	Julia Reed
Laura Dickinson	Marjorie Sigel
Karen Evans	Marcella Spears
Brad Hanson	Paul Sundquist
Susan Haugh	Kaylie Tully
Karla Heaton	Linda Tully
Cyndi Hopper	Cathie VanDanacker
Gary Kelsey	Dee Vodicka
Kevin Kirsch	Rosey Vogan
Virginia Kranz	Anita Wheeler
Wayne Kuklinski	Linda Wiecher
Amy Kutz	Juliet Wilhelmi
Robin Kutz	

---

**“What the world needs now is love sweet love,  
It's the only thing that there's just too little of.  
What the world needs now is love sweet love,  
No not just for some but for everyone!”**

- Hal David

## GUEST ARTISTS

---



**Well-Strung**

Well-Strung, a New York City based string quartet, derives their unique blend of vocals and strings by fusing classical music with the pop music of today. Members Edmund Bagnell (1st violin), Chris Marchant (2nd violin), Daniel Shevlin (cello), and Trevor Wadleigh (viola) spend their time making new music and touring internationally. The group was conceived by producer Mark Cortale and Chris Marchant. [www.well-strung.com](http://www.well-strung.com)



**Sierra DeMulder**  
*Poet*

Sierra DeMulder is an internationally touring performance poet and educator, a two-time National Poetry Slam champion, and a four-time published author. A 2014 McKnight Fellowship recipient, Sierra's work has been featured on NPR, *Huffington Post*, *The Advocate*, and more. In addition to performing, Sierra is the curriculum director of the **Slam Camp at Indiana University**, an annual writing summer camp for high school students, and one of the founders of Button Poetry, the largest digital distributor of spoken word in the world. [www.sierrademulder.com](http://www.sierrademulder.com)



**George Maurer**  
*Composer*

George Maurer considers his one-word job description to be “collaborator.” His diverse career has included arranging music for the Chiffons and Buddy Holly’s original Crickets, and performing with Dick Clark, Eric Clapton and Bobby Vee. Whether he’s composing original music for Saint Paul City Ballet, arranging ‘80s hits for the Minnesota Orchestra or selling out the Dakota Jazz Club with the acclaimed George Maurer Jazz Group, George has a talent for working as part of a creative team and realizing a collective artistic vision. George, a pianist, producer and McKnight Fellow composer, spent the past four years touring the U.S. as orchestral arranger for The Midtown Men, the original Tony-awarded leads of Broadway’s *Jersey Boys*. His arrangements have been performed by the Boston Pops and the National Symphony, and he has brought *Autumn Song*, his music-theater performance featuring the poems of Rainer Maria Rilke and Tennessee Williams, to Berlin and the Provincetown Tennessee Williams Theater Festival. George holds a B.A. in music composition from Saint John’s University. [www.georgemaurer.com](http://www.georgemaurer.com)



# 2017 WORLD PREMIERE: STILL STANDING

## American Composers Forum 2016 *Healing & Hope Through Song* Commission

*"Somewhere, there are fifty candles, burning."* When I read Sierra's first draft, I knew that being commissioned to add my composer's voice to the memory of fifty lives that ended violently in a nightclub in Orlando last summer (among other themes) was going to be no easy task.

I sat at my old upright, pondering how to use my composer's voice. It was the day after the election, and I recalled the lights of many candles already snuffed out by violence, AIDS, and suicide. I was anxious all over again for those lives that would burn in the near future, due to the tolerance of intolerance.

*"With reverence"* is the musical direction I chose to begin with. Simple. Powerful. Throughout this collaborative process, I have listened to One Voice and Well Strung approach *Still Standing* with nothing but reverence. Is there no other way to treat all human life?

Tonight is dedicated, with reverence, to those mentors, some of whom are still standing, who supported me when I had to face my parents over that kitchen table long, long ago.

- George Maurer, Composer



The American Composers Forum (ACF) enriches lives by nurturing the creative spirit of composers and communities. We provide new opportunities for composers and their music to flourish, and engage communities in the creation, performance and enjoyment of new music. Our goal is to make composers, and the music they create, a vibrant and integral part of our culture. By linking communities with composers and performers, ACF fosters a demand for new music, enriches communities, and helps develop the next generation of composers, musicians, and music patrons.

ACF's *Healing & Hope Through Song* is a unique, collaborative program which brings together a composer, poet, community service organization, and a musical organization to shine light on an issue facing members of our community, and to celebrate the strength of the human spirit through a new work of text and music. American Composers Forum wishes to thank John Sullivan for the commission of George Maurer, and John Larsen and Tom Arneson for additional program support [www.composersforum.org](http://www.composersforum.org)



RECLAIM's mission is to increase access to mental health support for queer and transgender youth. We strive to provide exceptional mental health support regardless of a client's insurance or ability to pay out of pocket by offering accessible therapy to youth and families, deep training to practitioners, as well as community education and partnerships. If you are a youth ages 13-26 seeking therapy, or a support person seeking therapy for someone you know - please send an email to [info@reclaim.care](mailto:info@reclaim.care) or call 612-235-6743.

## CONCERT PROGRAM

FEATURING

WELL-STRUNG

# WELL- VERSSED

## SET ONE

*Concert lyrics may be downloaded from the One Voice website. Please turn off cell phones and other electronic devices that make noise. No photos or video allowed during the performance. Thank you.*

---

### **Fight Song**

Music and lyrics by Rachel Platten  
and Dave Bassett  
Arr. by Roger Emerson  
Intro: Isabel Miller  
Solo: Kory Wolter

### **Bridges**

Music and lyrics by Bill Staines  
Arr. by Jane Ramseyer Miller

### **Well-Strung**

### **Refuge** from *Sing Evermore!*

Music by Gwyneth Walker  
Poem by Sara Teasdale

### **Spoken Word**

Sierra DeMulder

### **Words**

Music and lyrics by Anders Edenroth  
Featuring One Voice Ensemble

---



## STILL STANDING

World Premiere performance commissioned by One Voice Mixed Chorus

Music by George Maurer

Poetry by Sierra DeMulder, inspired by RECLAIM youth and performed by Sierra

*Healing & Hope Through Song* is underwritten by the American Composers Forum with funds provided by John Sullivan with additional support from John Larsen and Tom Arneson

### 1. Fifty Candles Burning

Solo: Will Drew

### 2. Still Standing

Solo: A.P. Hopper

### 3. A Hundred Roses

Octet: Ashley Hannahs, Lynn Holden, Cece Klueh,  
Saylem Olberg, Jen Rivera, Kristen Schweiloch,  
Emily Smith, Tracy Villinski

### 4. Here

Solos: Kelli Heckman, Jay Kurvers, Jennifer Root,  
Austin Wiebe

## INTERMISSION

---

## SET TWO

### Well-Strung

#### Spoken Word

Sierra DeMulder

### Let My Love Be Heard

Music by Jake Runestad, lyrics by Alfred Noyes

### Gabriel's Oboe

Music and lyrics by Ennio Morricone

Arr. by Craig Hella Johnson

### Blackbird

Music and lyrics by John Lennon and

Paul McCartney

Arr. by Daryl Runswick

Featuring OVation

Solo: Anna Schultz

### Pages from *Kindling*

Music and lyrics by Elizabeth Alexander

### What the World Needs Now Is Love

Music by Burt Bacharach, lyrics by Hal David

Arr. by Roger Emerson

---

# ONE VOICE 2017 LOOKING AHEAD!

Don't miss our topsy-turvy, gender-bending production of *The Pirates of Penzance* featuring Anita McColley as Pirate King along with her swarthy crew of lesbian pirates, General Stanley's "daughters" and a live band!

All performances are FREE on LGBT Pride Weekend (June 22-25) and are held on Raspberry Island just south of downtown St. Paul, under the Wabasha Bridge. Bring the whole family with your blankets, lawn chairs and a picnic!

See you there!

One Voice Mixed Chorus presents

# the Pirates of Penzance

A Topsy Turvy, Gender-Bending Musical Adventure

**PRIDE WEEKEND**  
PREVIEW THU. JUNE 22, 2017- 7:30 PM  
SAT. JUNE 24, 2017- 3:30 PM  
SUN. JUNE 25, 2017- 2:00 PM & 5:30 PM  
RASPBERRY ISLAND ST. PAUL, MN 55107

[WWW.ONEVOICEMN.ORG](http://WWW.ONEVOICEMN.ORG) 651.298.1954

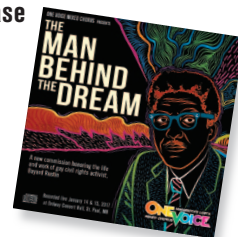
**ONE VOICE** MINNESOTA'S LGBT+ MIXED CHORUS  
Building community and creating social change by raising our voices in song.



## Take One Voice Home With You!

One Voice recordings are on sale in the lobby. Support the chorus and take home a CD! Recordings are also available for purchase on Amazon, iTunes or [OneVoiceMN.org](http://OneVoiceMN.org).

Our newest CD, *The Man Behind the Dream*, featuring our January 2017 commission on the life of gay, African American civil rights activist Bayard Rustin is on the way! Order yours today in the lobby for delivery by April.





# ONE VOICE & CONCERT PERSONNEL

---

**ARTISTIC DIRECTOR**  
**EXECUTIVE DIRECTOR**  
**OPERATIONS COORDINATOR**  
**OFFICE ASSISTANT**  
**ASSISTANT DIRECTOR**  
**ACCOMPANIST**  
**OVATION MUSIC DIRECTOR**  
**AD SALES**  
**BOOKKEEPER**  
**GRAPHIC DESIGN**  
**REHEARSAL RECORDINGS**  
**REHEARSAL ACCOMPANISTS**

Jane Ramseyer Miller  
Christopher Taykalo  
Alicia Pedersen  
Jen Rivera  
Erik Peregrine  
Mindy Eschedor  
Gary Ruschman  
Tom Becker, James Gottfried, Dick Van Deusen, Christopher Taykalo  
John Whalen  
Tony Horning  
Paul Pederson  
Stephen Swanson, Emily Urban

## ARTISTS

### WELL-STRUNG

Christopher Marchant, Edmund Bagnell,  
Daniel Shevlin and Trevor Wadleigh

### BASS GUITAR

Jay Young

### DRUMS

Sarah Johnson

### FLUTE

Danielle Boor

### HORN

Melissa Morey

## ENSEMBLES

### OVation

Will Drew, Joselyn Fear, Ashley Hannahs, Michael Lee, Anna Schultz,  
Dutch Van Haaften, Becky Warren

### WORDS ENSEMBLE

Sue Campbell, Beth Desotelle, Michael Dodson, Will Drew,  
Joselyn Fear, Kirby Goodell, Ryan "Dutch" Van Haaften, Paul Halvorson,  
Ashley Hannahs, Michael Lee, David McMahonill, Anna Schultz,  
Jasmine Scott, John Siracusa

## CONCERT PERSONNEL

**STAGE MANAGER**  
**TECHNICAL MANAGER**  
**STAGE ASSISTANTS**  
**ASL INTERPRETER**  
**BRILLE PROGRAMS**

Cathie VanDanacker  
Anne Hodson  
Courtney Chesher, Robin Keck  
Stephen Medicott  
Jennifer Dunnam



# MAJOR DONORS & SPONSORS

## FOUNDATION & GRANT SUPPORT

AM 950  
Best Buy  
Bigelow Foundation  
Burdick Family Fund of the Minneapolis Foundation  
Classical MPR – Radio Sponsor  
Cornerstone Copy Center  
Community Shares Minnesota  
James B. Linsmayer Foundation  
John S. and James L. Knight Foundation  
Metropolitan Regional Arts Council (MRAC)\*  
Minnesota State Arts Board\*  
National Endowment for the Arts  
St. Paul Cultural STAR Program  
Stagetime Productions  
Unity Church Unitarian

\*This activity is made possible by the voters of Minnesota through a Minnesota State Arts Board Operating Support grant, thanks to a legislative appropriations from the arts and cultural heritage fund.



## MAJOR DONORS

### THE CRESCENDO SOCIETY

In April 2006, One Voice inaugurated a multi-year giving society to ensure ongoing financial support for our mission-based, social justice-focused work. We are grateful to our exceptional donors who pledged at least \$1,000 per year for five years.

### THE CRESCENDO SOCIETY MAJOR DONORS

February 1, 2016 thru February 28, 2017

Anonymous  
Tom Becker and Kyle Kossol  
Sandra Brau  
Ronald and Charles Brunk-Parker  
Donna Doiron  
Chris and Marisa Geisler  
James and Jason Gottfried  
Thomas and Diane Haines  
Sarah Henderson & Jolynn Nelson  
Katrina Johnson and Anita Wheeler  
Tim Kanaley  
Jon and Lisa Lewis  
Marnie Milbert and Elaine Voboril  
Sarah and Jeff Olson  
Rev. Theo Park and Dennis Christian  
Shannon Pierce and Rachael Kroog  
John Sullivan  
John Whalen

## PLANNED GIVING

In 2008, One Voice launched a program to honor those who have left One Voice a legacy gift in their wills or estate plans in support of our mission of building community and creating social change. Thank you to the following individuals:

Sharon Barnd  
Sarah Bizek  
Donna Doiron  
Charlene Greenwald and Darcy Rowe  
Jane Ramseyer Miller  
Carla Peck  
Paul Petrella  
Lisette Schlosser  
Colleen Kay Watson  
John Whalen

If you have already named One Voice as a beneficiary in your estate plans, or are considering such a gift, please contact Christopher Taykalo at 651.298.1954 or [ExecutiveDirector@OneVoiceMN.org](mailto:ExecutiveDirector@OneVoiceMN.org). Thank you for your generosity.

## DYNAMIC DONORS

Donations received from February 1, 2016 thru February 28, 2017  
One Voice Mixed Chorus relies on the generous gifts of individuals whose hopes and dreams complement our mission. We offer our profound gratitude to the following supporters:

### FORTISSIMO — \$2,500 & ABOVE

Mairi Doerr  
Donna Doiron  
Katrina Johnson and Anita Wheeler  
Dr. Thomas Knabel and Kent Allin  
Dr. Jennifer F. Martin  
Sharon McDonald  
Mary McDougall and Colleen Watson  
Roberta Parnell  
Carla and Stephanie Peck  
James and Susan Roth  
John Sullivan

### FORTE — \$1,000 TO \$2,499

Peg Bauwens and Lisette Schlosser  
Tom Becker and Kyle Kossol  
Ronald and Charles Brunk-Parker  
Allan and Lou Burdick  
Dennis Christian and Rev. Theo Park  
Chris and Marisa Geisler  
James and Jason Gottfried  
Thomas and Diane Haines  
Sarah Henderson and Jolynn Nelson  
Gary Kelsey and Kevin Smieja  
Jeffrey and Sarah Olson  
Matthew Peak and Spencer Putney  
Shannon Pierce and Rachael Kroog  
Jane Ramseyer Miller and Susan Haugh  
One Voice Charlotte

River City Mixed Chorus  
Lane Skalberg and Dan Brennenstuhl  
John Sokalski and Cheryl Laurent  
Christopher Taykalo and Michael-jon Pease  
Allison Thiel and Lawrence Stephenson  
Gloria and Cal Vande Hoef  
John Whalen

### **MEZZO FORTE — \$250 TO \$999**

Susan Albrecht  
Annelise Allan and Pamela Vermeer  
Jeff Anderson and Dennis Wu  
Anonymous  
Doodee Backstrom  
John Bagniewski and Brad Hanson  
Barbara Beers and Joan Wing  
Martha Bentley and Rebecca Sechrist  
Carla Blumberg  
Robert Carlson  
Community of Christ –  
Saint Paul Congregation  
Craig Coogan  
James Davies  
Jill Dawe and Sarah Johnson  
Duane Dial and Allan Warrior  
Peg and Gene Duenow  
Shawn Erwin  
Wendy Evans  
Patricia Fair and Randy Arnold  
Kathleen Fraher  
Steve Greenberg and Keith Johnson  
Kelley Harness  
Adrian Hegeman  
Brad Hemak  
Paul Hogrefe and Jim Sauder  
Lousene Hoppe  
Zoe Jenkins  
Pamela Johnson  
Ann and Bill Lanoue  
John Larsen and Michael Stewart  
Rose and Michael Lethert  
Thomas Lewin  
Dennis Kearney and Randy Okan  
Jerry Evan Kelley and Robert Winters  
Shaun Kelly and Sarah McMahill  
Anne St. Martin Klueh and Larry Klueh  
Phillip Lund and Julia Reimer  
Marion McNurlen  
Marnie Milbert and Elaine Voboril  
Lee Miller and Susan Fisher Miller  
William and Phyllis Miller

Karen Muleski  
John Myers  
Mary Nienaber  
Cheryl Paullin  
Steven Pearthree  
Paul Petrella and Ed Fisher  
Shari Pleiss  
Catharine Reid  
Helen Rohrich  
Amy Short  
Sandy Silverstein  
Jake Thacker  
Eleanore Troxel  
U.S. Bank  
Dick VanDeusen and Marjorie Siegel  
Rebecca Warren  
Janice Woodward  
Judith Wright  
Joe Zappa  
Louise Ziegler

### **MEZZO PIANO — \$100 TO \$249**

Lori and Hadley Bakker  
Mike Bash and Sharon Rodning Bash  
Marion Bauer  
Ruth Birkholz  
Mary Blomquist  
Jeri Boisvert  
Anita Bradshaw and Sherrie Stockton  
Sam Bullington and Angie Galik  
Judy Cooper  
Carol Cummins and Suzanne Born  
Julie Haight Curran  
Barbara Daiker and Andrean Lynch  
Catherine and Stuart Dalton  
Deb DeMeester and Paul Schalekamp  
Anna Dennis and Karen Wiebe  
Laurie Dickinson and Cate Hesser  
Anita Dinerstein  
Ron Dubis  
John and Susan Dunlop  
Robert and Janne Eller-Isaacs  
Karen Evans and Betsy Lee  
Arlene and Don Fancher  
Federica Fields  
Loren and LeEtta Flicker  
Hal Freshley  
Joan Gacki  
Gary Gardner and Helen Kivnick  
Vicki Lee Geisler  
Phyllis Goldin and Wanda Brown

Jeff and Joyce Greene  
Charlene Greenwald and Darcy Rowe  
Jim and Jean Hartman  
Christine Hazel  
Allan Henden and Alan Scott  
Russ Heuckendorf  
Jerilyn Hirsch  
Joel M Hodroff  
Al and Alice Holst  
Martin Jehn  
Judy and David Jerde  
Ann Eaton Johnson  
Linda Johnson  
Rocky Jones and Dennis Orfei  
Iris Karow  
Cece Klueh  
Nancy Kluver  
James and Mary Koon  
Ginger Kranz  
Marcus Larson and Earl Moore  
Jonathan and Lisa Lewis  
Janet Liechty  
Richard and Juanita Luis  
Phillip Lund and Julia Reimer  
Roderick MacPherson  
Justin Martin and Brian Wollum  
Timothy Martin  
Donald McCall and Thomas Richardson  
John and Kimberly McDevitt  
Lane and Barbara Meyer-Reed  
Cecilia Miller and Robin Keck  
Leah Miller  
Anderson Montgomery  
Joy Mudgett and Beth Kiene  
Rita Mueller  
Dennis Needham  
Jane Newman and Amy Lange  
Saylem Olberg  
Sarah Olson  
Travis Osborne  
Brian and Beth Rahn  
Jen Rivera  
Ramona Scarpace and Georgianna Smith  
Lisa Friedman and Wayne Schneider  
Maureen Seibert  
Nancy Speaker and Jean Stepp  
Joseph Stanley and Lori Zook-Stanley  
George Stevens  
Nathan Stohlman and Jennifer Heaton  
Evie and John Tanner  
Jerry Tri and Vicki Janisch-Tri

John VanDanacker  
Earl Ward  
Doug Warring  
Beth Waterman  
Charles and Laurel Watt  
Ann Wendel  
William and Clarice Westall  
Richard and Sandra Westby  
Angela Woosley  
Betty Youngman

## **PIANO — \$5 TO \$99**

Gregory Allen  
Austin Anderson  
Rondi Atkin  
Dorothy Barnes-Griswold  
Scott Bartell  
Eldon and Kathleen Bystedt  
Danielle Cabot  
Susan Campbell and Minda Garcia  
Karen Casebeer  
Juan Chanco  
Jeanne Cornish  
Lyn Crosby  
Shauna Dee  
Nicole Delfino Jansen  
Denise DeVaan  
Carolyn Dobis  
Dan Donkers  
Jeanine Dorfman  
Sandra Ecklein  
Joselyn Fear  
Robert W Fulton  
Cathy Geist and Carol Schoenecker  
Karen and Bob Gerdes  
Brian Geving  
Allen Gibas and Pat Jones  
Michael Gilligan and Deanna Lackaff  
Kelsye Gould  
Marie Grace  
Kenneth and Ellen Green  
Janet Greenlees and Charles Yancey  
Greta Grosch  
Erika Grossman  
Eric Gustin and Kevin Horne  
Patricia L. Hague and Barbara E. Merrill  
Paul Halvorson  
Ruth Halvorson  
Kelly Harter

Harry Hartigan  
Kate Hennessy-Keimig  
Stephanie Hipple  
Gerald Hoffman  
Donald and Elsa Hofmeister  
AP and Cyndi Hopper  
Steven Huber  
Tricia Hummel  
Heidi Jensen  
Amy Johnson  
Charles M. Johnson  
Darcy Juhl and Bayla McDougal  
Susan Kaplan and Nancy Okerlund  
Carrie King  
Kevin Kirsch  
Donald and Gail Kleven  
Jay Kurvers  
Gil Lautenshlager and Karen Mead  
Ellen Lewin  
Steve Lick and Catherine Jordan  
Amy Litman  
Ronald and David Loen  
David Lohman  
Beatrice Magee  
Anita Makar  
Heidi Mann  
Nancy Mastro  
Laurie Mattison Miller  
Brian and Liz McClear  
Linda McCormick  
Brian McDougall  
David and Jane McMahill  
Mark McNeill  
Ellen Merlin  
Rebecca Merrill  
Jim and Robin Miller  
Jonathan Moore  
Ron Morris  
Claire Morrison  
Alex Muleski  
Nicole and Curt Navratil  
Karen Nestingen  
Sharon Nolte  
Cameron and Karen Obert  
Barbara Ogorek  
Glenn Olson  
Ernesto Ortega and Gordon Rausch  
Sandra Overland  
Judith Parr

Alicia Pedersen  
Richard Price  
Claire Psarouthakis  
T. Mychael Rambo  
Katie Rasmussen  
Julia Reed  
Michelle Rever  
Michael Robshaw  
Connie Roehrich  
Diane Rolie  
Susan Rostkoski  
Abby Roza  
Douglas and Sandra Rude  
Mark Rusher  
Jay and Karen Rusthoven  
Wayne Scheffel  
Gerald and Joetta Schlabach  
Sally Schlosser  
David Schultz  
Allison Schumacher  
Kristen Schweiloch  
Nancy Scott  
David Shannon  
Lee Silverstein  
Linda Joyce Smith  
Mimi Smith  
Frank and Barbara Squadrito  
Steve St. Martin  
Laurel Stiebler  
JD Stocksett  
Helen Stub  
Kimberly Sueoka  
Charlotte Sullivan and Tara Bauer  
Robert Teerink  
Lawrence and Liz Tempel  
Sean Tessmer and Jenny Neidich  
Emily Tinawi  
Robert Tyler and Paul Amble  
Irma Valenzuela  
Ryan and Tisha Van Haaften  
Sally Waterman  
Myrna Weyer  
Carole Whitney  
Austin Wiebe  
Timothy Woods and Debbie Gillespie  
Daniel Wozney  
Ralph Wyman  
Susan Zietlow

---

Every effort has been made to ensure the accuracy of these lists. If your name has been inadvertently omitted or incorrectly listed, please accept our sincere apologies and contact Alicia Pedersen at: 651.298.1954 or [Operations@OneVoiceMN.org](mailto:Operations@OneVoiceMN.org).



## SPECIAL TRIBUTE DONATIONS

We are grateful for the gifts we receive from generous supporters given in honor or remembrance of friends or family. The following special gifts were received between February 1, 2016 and February 28, 2017.

### DONATION

Rondi Atkin  
Ron Dubis  
Peg Duenow  
Loren Flicker  
Kathleen Fraher  
James and Jason Gottfried  
Ruth Halvorson  
Harry Hartigan  
Jerry Tri and Vicki Janisch-Tri  
Thomas Lewin  
Gil and Karen Mead  
Leah Miller  
Travis Osborne  
Abby Roza  
Sandy Silverstein  
Evie and John Tanner  
Rebecca Warren  
Betty Youngman

### DONATION

Lyn Crosby  
Donna Doiron  
Donna Doiron  
Jerilyn Hirsch  
John and Cheryl Laurent  
Jon and Lisa Lewis  
Jim and Robin Miller  
Jonathan Moore  
Diane Rollie  
James and Susan Roth  
Robert Tyler and Paul Amble

### IN HONOR OF...

Kate Lynn Hibbard's 60th Birthday  
CeCe Klueh and Sarah Olson  
Colleen Watson  
LeEtta Flicker  
One Voice High School performances  
Robert Johnson  
Paul Halvorson  
Jane Ramseyer Miller  
Steve Milloy and Jane Ramseyer Miller  
Rhoda Lewin  
Colleen Watson  
Mary Roth  
Robyn and Wayne Bishop  
Marisa G. rocks!  
Lee Silverstein  
Phyllis and Wanda  
Lola Moffat  
Dave and Jane McMahill 50th Anniversary

### IN MEMORY OF...

D'Ann Prior  
Dallas Police Officers  
Philando Castile  
Jenny Engh  
Sharon Sechrist  
Eloise Heidecker, mother of Lynne Larsen  
John Sherman  
Bayard Rustin  
Donald Rollie  
Rhoda Lewin  
Clyde and Bert

**CAROLEE A. LINDSEY, CPA**  
Principal

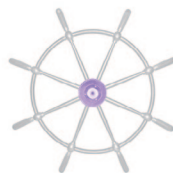
clindsey@weberdeegan.com  
www.weberdeegan.com

7250 Metro Blvd, Suite 100  
Edina, MN 55439  
Direct Dial: 952-542-5647  
Direct Fax: 952-542-5667  
Main: 952-920-6186



**Weber & Deegan, Ltd.**

*Certified Public Accountants*



**URBAN WHEELHOUSE**

**Darolyn Gray**

*President and CEO*

612.554.1314

Darolyn@UrbanWheelhouse.com  
www.UrbanWheelhouse.com

*DRIVING YOUR MISSION,  
GUIDING YOUR VISION*

*BUSINESS AND RESOURCE DEVELOPMENT, GRANT WRITING, PROMOTION, PR*

ComForCare   
HOME CARE

# THE BEST LIFE POSSIBLE FOR YOUR FAMILY



**STAY** at home and continue to do all the things you love.

**CONTROL** how much care you need, from medication reminders and meal preparation, everyday chores and errands, bathing, grooming or even private nursing care.

(651) 538-4388

ComForCare.com/Twin-Cities-Care

**PHILIPS**  
**Lifeline**  
AUTHORIZED  
Service Provider

★ ★ ★ Twin Cities  
Gay Men's Chorus

Friday/Saturday  
April 7-8 • 8pm

# Hand in Hand

with  
*Heartland*  
MEN'S CHORUS  
featuring Tyler's Suite

Twin Cities Gay Men's Chorus + Kansas City's Heartland Men's Chorus



Chorus:

612-339-7664  
tcgmc.org

U of M Tickets & Events:

612-624-2345 or tickets.umn.edu

Adults: \$25-\$53 • 12 & Under: 50% off



## Stagetime Productions

nlgcc  
NATIONAL GAY, LESBIAN, & BISEXUAL COUNCIL



Shannon Pierce, Producer  
and the Stagetime Team

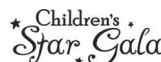


952-835-1218 office

763-360-7750 cell

www.stagetimeproductions.com

## Producing nonprofit galas, events and conferences



## TO US, YOU ALWAYS TAKE CENTER STAGE.

We'll be there every step of the way, to find and close a loan that's right for you. Plus, Alerus guarantees\* on-time closing or we'll pay the seller \$10,000.  
**Apply online: [gleasonaustingroup.com](http://gleasonaustingroup.com)**



**Pat Gleason**  
MORTGAGE BANKER

NMLS 459439  
952.847.9834  
[pat.gleason@alerus.com](mailto:pat.gleason@alerus.com)

**Bob Austin**  
MORTGAGE BANKER

NMLS 400546  
952.417.8456  
[bob.austin@alerus.com](mailto:bob.austin@alerus.com)

**ALERUS**



EXPERT HOME FINANCING. GUARANTEED.™

\*\$10,000 guarantee is paid to the seller if the loan does not close based on our approval letter. The approval letter lists the conditions that must be met for the guarantee to be valid. This guarantee is not valid if the property is deemed by Alerus Mortgage to be in a declining market or if the investor guidelines change prior to closing. The approval letter has an expiration date. The loan must close by the expiration date or the borrower must qualify for an extension. This guarantee is not valid if borrower or sellers choose not to close for reasons beyond our control.

**LGBTQ** in Minnesota?  
Looking for a healthcare provider?

visit the

## Minnesota LGBTQ Provider Directory



[mnlgbtqdirectory.org](http://mnlgbtqdirectory.org)



*In partnership with the  
Minnesota Transgender Health Coalition*

**SYMPHONIZE**  
MINNESOTA PHILHARMONIC ORCHESTRA

**Sundin Music Hall**  
Hamline University  
1531 Hewitt Avenue  
Saint Paul, MN 55104

May 13<sup>TH</sup>, 2017  
Concert | 7:30<sup>PM</sup>

May 14<sup>TH</sup>, 2017  
Concert | 3:00<sup>PM</sup>

**AMERICANS  
in  
PARIS**





**THANKS!!  
ONE VOICE  
FOR 29 YEARS  
OF GREAT  
MUSIC!**



**Olympic Painters | 612.770.3535 | OlympicPainters.com**



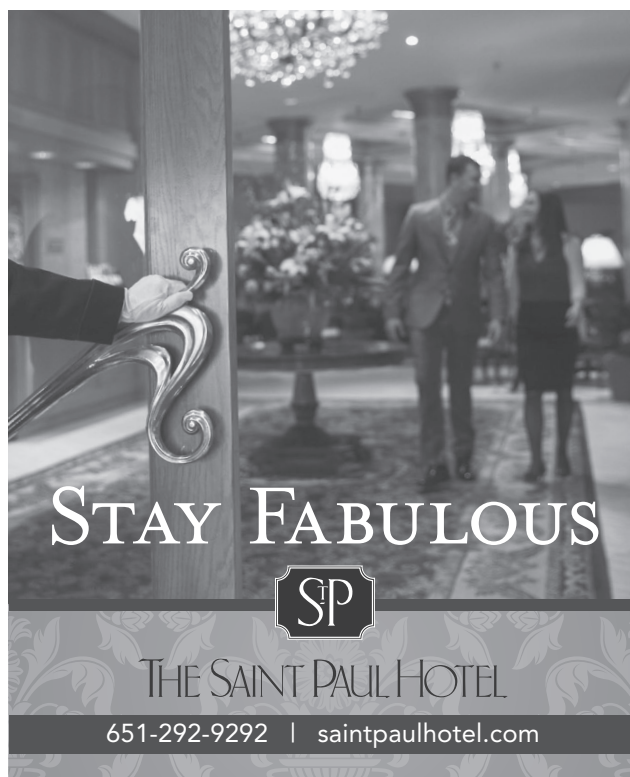
***Save the Date for An Epic Battle  
for Choral Supremacy!***

**July 17, 2017 7:30pm Show Time**

**The Woman's Club of Minneapolis**

410 Oak Grove Street Minneapolis, 55403

This event is a fund-raiser for One Voice Mixed Chorus





Since 1981

**CORNERSTONE**  
C O P Y C E N T E R

Printing  
Design  
Bindery

Photo Books Posters Mail Service

*the Cornerstone Difference...*

**TEAMWORK**

*featuring...*



[www.focusinpix.com](http://www.focusinpix.com)

*Be a part of the difference*  
**EXPERIENCE CORNERSTONE**  
[www.cornerstonecopy.com](http://www.cornerstonecopy.com)

Easy to create

**ADOPTION**  
— profile books

**How it works...**

*Our free Focus In Pix software is simple to download and will help your family easily create a personalized Adoption Profile!*

- 
- 1 Go to [focusinpix.com](http://focusinpix.com)
  - 2 Click on Windows or Mac.
  - 3 Download and install software.
  - 4 Add your pictures and text.
  - 5 Order and Upload!



**CORNERSTONE**  
C O P Y C E N T E R

**BURNSVILLE**

952.891.8700

13775 Frontier Court

Burnsville, MN 55337

**LAKEVILLE**

952.232.0550

20776 Holyoke Ave

Lakeville, MN 55044

[www.cornerstonecopy.com](http://www.cornerstonecopy.com) | [www.focusinpix.com](http://www.focusinpix.com)



# Getting A **Home** Mortgage is as easy as 1 2 3 Home Run!

1. Start with a free consult about how much house you can buy & let us help you remove barriers
  2. Work with your preferred realtor to hunt for homes (*see our gift below to help with that*)
  3. With your Purchase Agreement, we work to get your loan approved at the best price and terms
- Home Run!** After closing, you are **Home Owners** building equity & potentially reducing your taxes

As a two-person loan officer team with over 15 years of industry experience, we focus on empowering first-time buyers (and others) to experience the joy and benefits of home ownership

---

## DOWNLOAD HOME SCOUTING®

Search for homes with a trusted real estate app



Download the Home Scouting® App  
A Real Estate Service of Home Buyers Marketing II, Inc.



**Gift:** Put **Home Scouting – MLS** on your smart phone. Enter **VIP Code 651 206 3377**

*Create custom home searches and get email updates Password-protected and your info is not sold*

---



**Contact Us Today:**

**Michael Dietrich** 651.206.3377  
[Michael@iLoanHomeMortgage.com](mailto:Michael@iLoanHomeMortgage.com)

**Paul Halvorson** 612.296.7407  
[Paul@iLoanHomeMortgage.com](mailto:Paul@iLoanHomeMortgage.com)

**iLoan Home Mortgage**

2324 University Avenue W #202  
St. Paul, MN 55114

NMLS: Michael 334183, Paul 1139989, iLoan 4474

